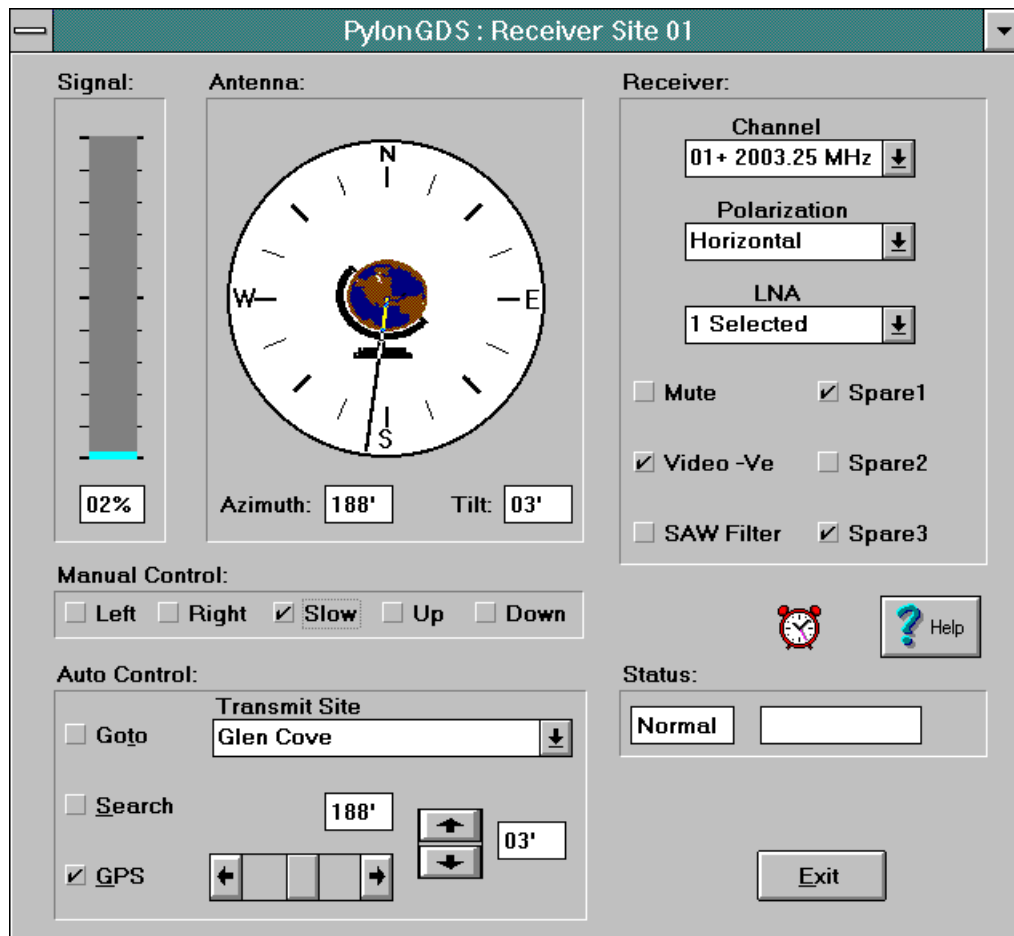


PylonGDS-ENG2 : Broadcast Remote Control Software System



The Pylon GDS system is a general purpose, graphic display system for operator inter-action and control of intelligent plant equipment. The ENG variant has been configured for use with broadcast antennas and equipment, to fully automate the remote control of ENG receive sites from a central location.

Features:

- Industry standard IBM PC compatible
- Multi platform Windows GUI
- User configurable
- Full on-line diagnostics
- Complete manual and automatic control
- Comprehensive context sensitive on-line help
- Continuous alarm supervision

Description:

The Pylon software is connected to the receiver site via standard PC serial communication channels, which operate high speed streaming protocols to ensure the fast secure execution of commands in the outstation.

Complete control of both rotator and fan beam antenna systems is provided through both manual control buttons and a full set of automatic control facilities which include:-

- Goto preset targets
- Search facility for the peak signal
- GPS helicopter tracking system
- Full previous transmit site recall from a stored database of 1000 records

Note: Product revisions may vary from the details given here

For Further Information:

Web: www.customelectronic.demon.co.uk

Tel:+44 (0) 1767 313167

Fax:+44 (0) 1767 313167

PylonGDS-ENG2 : Broadcast Remote Control Software System

The receiver AGC signal at the receive site is monitored and displayed in real-time to the operator indicating the strength of the signal currently received. The receiver controls include complete control of Mute, Video invert and SAW filters, together with the facility for three user definable spare relay outputs.

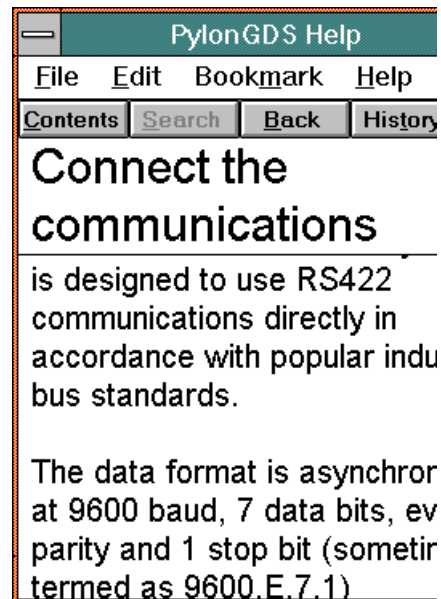
Receiver channel selection is from a database supporting up to 256 combinations with LNA selection and polarisation, antenna polarisation also being available.

Continuous alarm monitoring is made available both on receive site summary alarms and also on communication failures with the remote sites.

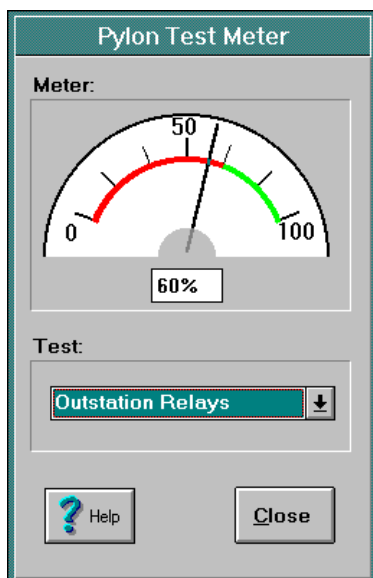
Context sensitive on-line help is available throughout the operators use of the package, which includes full documentation on how to use the package and control all aspects of its operation. A demo install facility and guided tour are available for evaluation purposes.

All aspects of the Pylon GDS configuration are available on-line and all communication parameters, site contents and databases are fully selectable and editable through this on-line configuration system.

Complete diagnostics of the Pylon GDS software and its communications with the remote sites are easily available through the use of the Pylon Test Meter, which provides on-line testing of all elements of the communication system, including the intervening modems and also provides facilities to exercise the relay and control functions in the distant outstation.



Context Sensitive Help



PylonGDS Test Meter Diagnostics

Ordering Information	
PylonGDS-ENG	Part No: 8464

Note: Product revisions may vary from the details given here

For Further Information:

Web: www.customelectronic.demon.co.uk

Tel:+44 (0) 1767 313167

Fax:+44 (0) 1767 313167