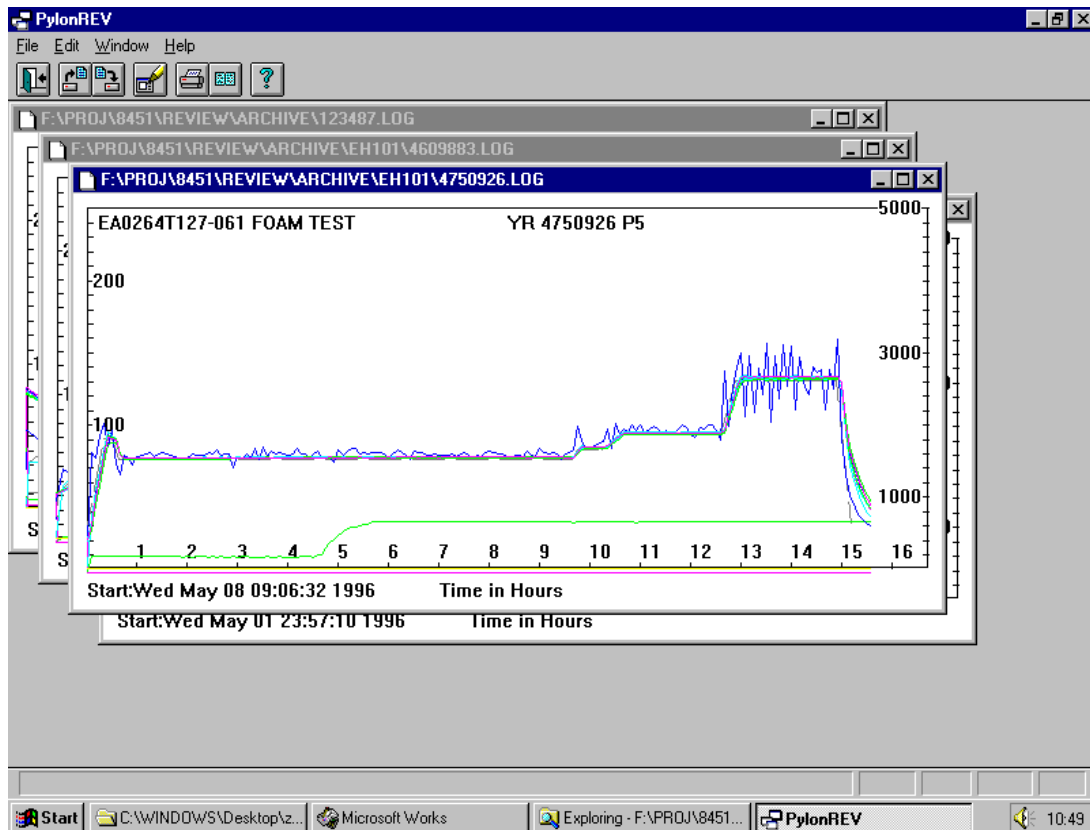


PylonREV-8512 : Data Review Software Package



The PylonGDS system is a general purpose, graphic display system for operator interaction and control of intelligent plant equipment. The companion 8512 Review package has been produced specifically to allow the graphical review of logged data from PylonGDS systems.

Facilities are provided to read logged data, Display and Print it graphically, Archive it to other datasets and Export the data in spreadsheet compatible formats.

Features:

- Industry standard IBM PC compatible
- Multi platform Windows GUI
- Colour Graphical Display and Printing
- Multiple Document Interface
- File Archive and Export Facilities
- User Configurable
- Comprehensive context sensitive on-line help

Installation:

The PylonREV system requires a 386 or higher PC, Windows 3.1, 3.11 or Windows 95, 2mBytes of disk space are required together with a Windows installed printer in landscape mode.

The PylonREV software is installed from the single 'PylonREV Install Disk No.1' by running the a:INSTALL.EXE program.

This installs the system into c:\pylon\8512 by default and creates a PylonREV program group.

Operation:

The PylonREV program group contains entries to invoke PylonREV, Help and Readme functions. The review package is started by selecting the PylonREV Review Package Icon.

Note: Product revisions may vary from the details given here

For Further Information:

Web: www.customelectronic.demon.co.uk

Tel:+44 (0) 1767 313167

Fax:+44 (0) 1767 313167

PylonREV-8512 : Data Review Software Package

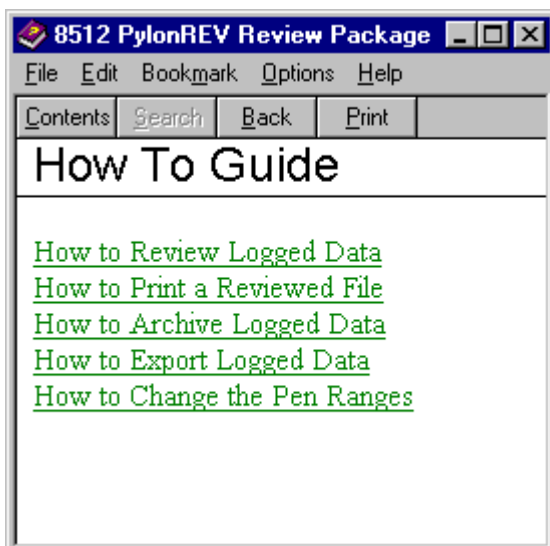
When started, the PylonREV system presents a main program screen in standard MDI format, which has an operator menu structure to access 'File', 'Edit', 'Window' and 'Help' functions below which is a tool-bar to allow short cuts to the most common functions. Hints are displayed when the mouse cursor is held inactive over particular controls and using the menu and tool-bar, the user can navigate through the system.

The on-line help system can be accessed from the Help|Contents menu or from the Help toolbar button. This contains information on how to operate the package and perform common functions.

A key feature of the package is the ability to quickly and easily open a current log file from a PylonGDS database system for review, Print the graphical information contained, Archive a copy of the data and if necessary Export the data for further analysis in popular spreadsheet packages.

The PylonREV pen configuration is available on-line allowing the user to select which traces are visible and in which colours.

Context sensitive on-line help is available throughout the operators use of the package, which includes full documentation on how to use the package and control all aspects of its operation. A demo install facility and sample data files are provided in the LogData sub-directory for evaluation purposes.



| Ordering Information | |
|----------------------|------------------|
| PylonREV8512 | Part No: 8512Rev |

Note: Product revisions may vary from the details given here

For Further Information:

Web: www.customelectronic.demon.co.uk

Tel:+44 (0) 1767 313167

Fax:+44 (0) 1767 313167