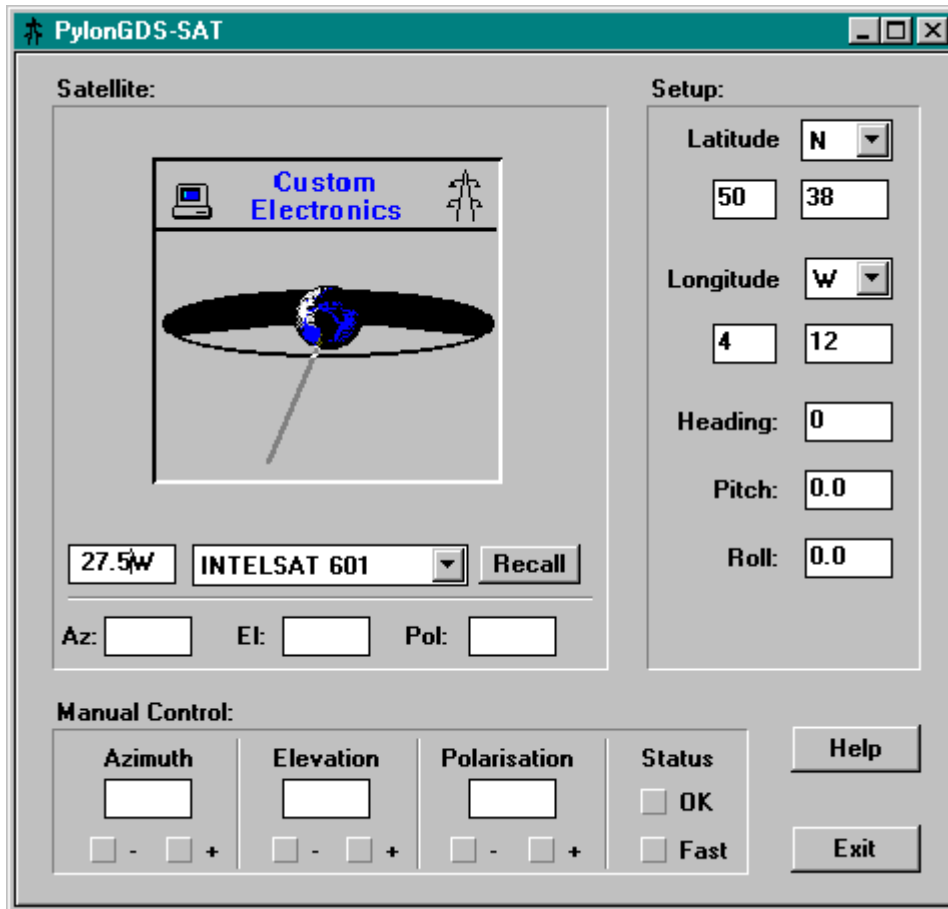


PylonGDS-SAT : Antenna Remote Control Software System



The Pylon GDS system is a general purpose, graphic display system for operator inter-action and control of intelligent plant equipment. The SAT variant has been configured for use with satellite broadcast antenna controllers, to fully automate the remote control of antenna positions from a central location, it can also be used off-line as a handy calculator for manual settings.

Features:

- Industry standard IBM PC compatible Multi platform Windows GUI
- Axes calculations including vehicle offsets
- Extensive Database of popular satellites
- Complete manual and automatic antenna control
- Comprehensive context sensitive on-line help

The 8590 PylonGDS-SAT Demo Disk allows the use of the Pylon GDS software system for training or demonstration purposes. It uses a simple demo driver to allow operation without any outstations attached.

Minimum Hardware Requirements:

- IBM PC Compatible
- SVGA Colour graphics
- 3 MByte free hard disc space
- Microsoft compatible mouse
- Windows 3.1 or later.

Installation:

Insert the demonstration disk into your floppy disk drive and from the Windows FileManager select File | Run and enter A:INSTALL.EXE (or B:INSTALL.EXE as appropriate). Follow the on-screen prompts.

Operation:

Once installation is complete you can run the system by selecting the Pylon SAT group in program manager, and selecting the PylonGDS-SAT icon. The system will initialise and the main control screen will be presented.

Note: Product revisions may vary from the details given here

For Further Information:

Web: www.customelectronic.demon.co.uk

Tel:+44 (0) 1767 313167

Fax:+44 (0) 1767 313167

PylonGDS-SAT : Antenna Remote Control Software System

Setup your Antenna Location:

Put your site Latitude and Longitude into the setup area, using direction, Degrees and Minutes.

E.g. N 51 52.80 W 0 24.6

If operating from a vehicle, enter any offsets for Heading, Pitch and Roll. (Heading is True Degrees with 0=North and +90=East. +Ve Pitch is van nose down. +Ve Roll is UK driver side up).

Selecting a Satellite from the Database:

Method 1) Click on the Satellite drop down combo-box and scroll to the desired entry. Do this by clicking and holding the mouse button down and releasing when the desired entry is highlighted.

Method 2) Alternatively 'grab' the orbit pointer by clicking the mouse over the planet earth and holding it down, then move it around again until the the desired entry is highlighted.

Method 3) Alternatively simply click in the orbit edit box and type in the desired orbit in degrees followed by either 'E' or 'W' as appropriate.

Calculate the Axis Positions:

Simply hit the 'Recall' button and read the Az, El and Pol outputs.

Pan The Antennae:

If you are connected to the controller the antennae will now be panning to the Satellite selected. When complete you can make full manual adjustments using the momentary manual controls for the three axes in either slow or fast mode.

Note: Product revisions may vary from the details given here

For Further Information:

Web: www.customelectronic.demon.co.uk

Tel:+44 (0) 1767 313167

Fax:+44 (0) 1767 313167