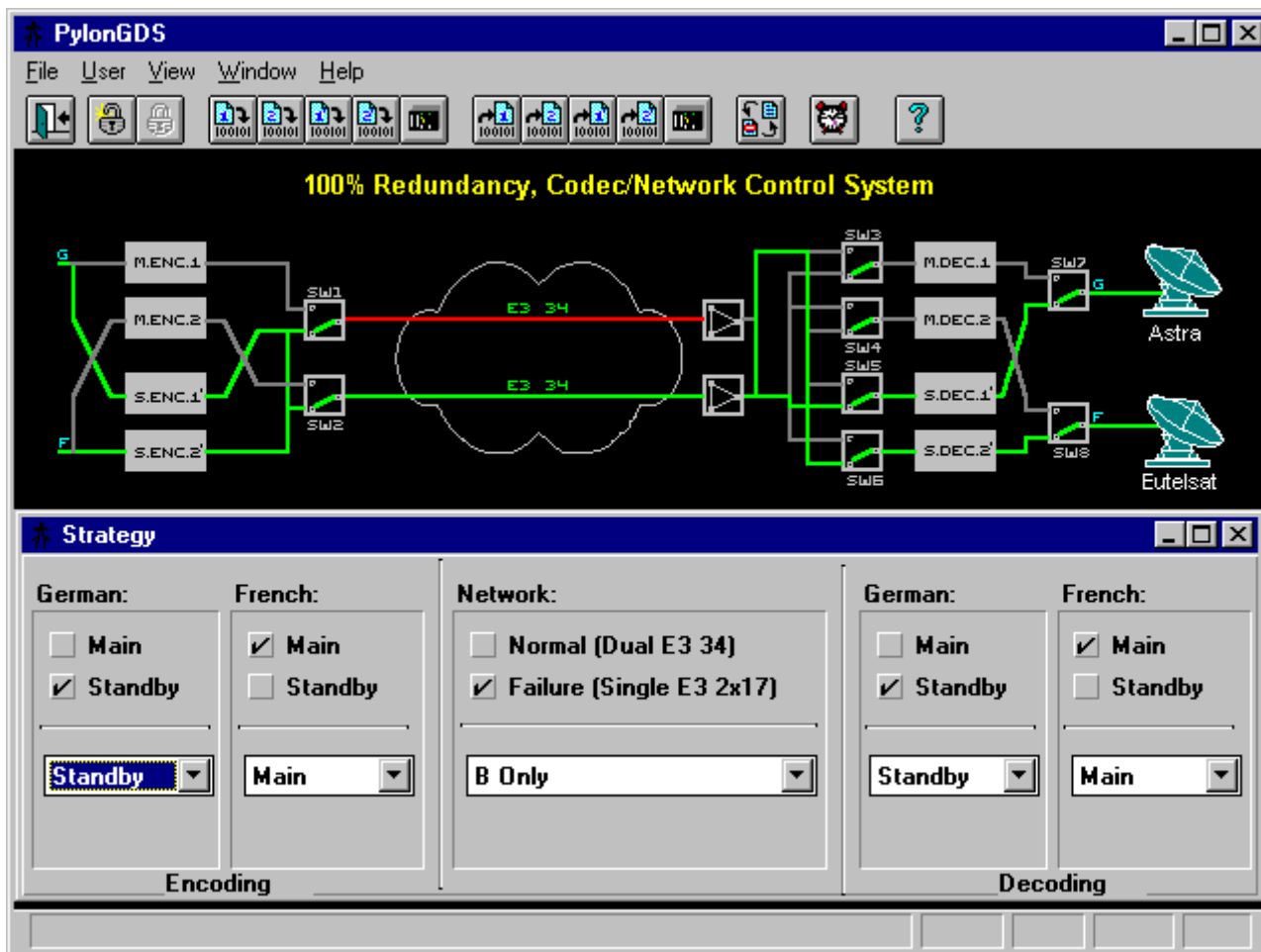


## PylonGDS-8657 : Network Codec Remote Control Software System



The Pylon GDS system is a general purpose, graphic display system for operator inter-action and control of intelligent plant equipment. The 8657 variant has been configured for use with codec transmission equipment, to fully automate the remote supervision and redundant control of equipment and networks from a central location.

### Features:

- Industry standard IBM PC compatible
- Multi platform Windows GUI
- User configurable
- Supervisory Control Strategy
- Complete manual and automatic redundant control
- Comprehensive context sensitive on-line help
- Continuous alarm supervision
- Summary and Detail equipment displays
- Data, Alarm and Event Logging
- User access control
- Remote dial-in capability

### Description:

The PylonGDS software is connected to the encoder and decoder sites via standard PC serial communication channels, which operate high speed industry standard protocols to ensure the fast secure control of the equipment, through S8000 series outstations.

Complete control of encoder and decoder sites is provided through both manual and automatic supervisory control for:

- Main and Standby Encoders
- Main and Standby Decoders
- 34Mb/s and 2x17Mb/s modes
- Redundant Network Control
- Auxilliary Switching

Communication drivers are available for a wide variety of devices including popular industry standard multi-drop buses.

Note: Product revisions may vary from the details given here

### For Further Information:

Web: [www.customelectronic.demon.co.uk](http://www.customelectronic.demon.co.uk)

Tel:+44 (0) 1767 313167

Fax:+44 (0) 1767 313167

## PylonGDS-8657 : Network Codec Remote Control Software System

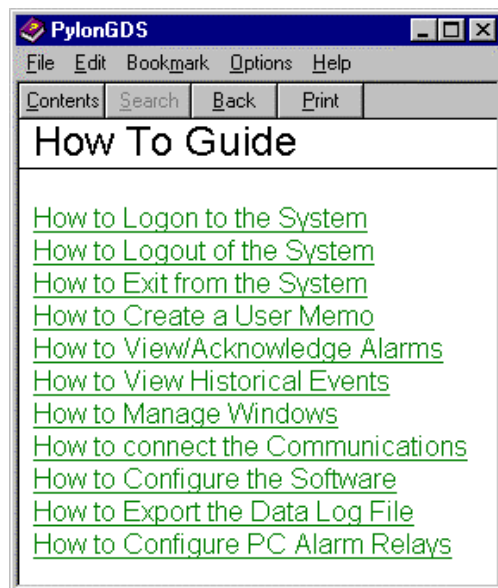
The PylonGDS software is a MDI application which presents a main display window containing a mimic diagram of the installed system which is annotated in live colour displaying the status of the equipment and the signal flow within the scheme. Through this mimic diagram and also through the menu system, the operator can navigate through the Windows to monitor or control the operation of the equipment within the scheme.

The Pylon System supports the nomination of users who may log on and log off the system. Whilst logged on, they are granted a level of access which determines the availability of various controls to them during their session in Pylon. Users may view a summary screen for each piece of equipment within the scheme, the current alarms, or the history of recent operations. Details screens are also available for more information on the individual equipment items. Users may also generate memos for inclusion in the event history file.

The Pylon GDS software continually scans the outstation for alarm status and provides the retransmission of alarm relays through to a relay card installed in the PC and also to the audible alarm annunciation system within the PylonGDS software. Continuous data recording, with log data export and event history facilities is also available.

The PylonGDS System also provides access to the outstation control strategy within the overall scheme providing control at workstation level. The workstation operator can choose the control modes and equipment in use.

On line help is provided throughout the PylonGDS System giving complete access to support for all aspects of operation and maintenance including a comprehensive "How To" and fault finding guide.



Ordering Information	
PylonGDS-8657	Part No: 8657

Note: Product revisions may vary from the details given here

### For Further Information:

Web: [www.customelectronic.demon.co.uk](http://www.customelectronic.demon.co.uk)

Tel:+44 (0) 1767 313167

Fax:+44 (0) 1767 313167