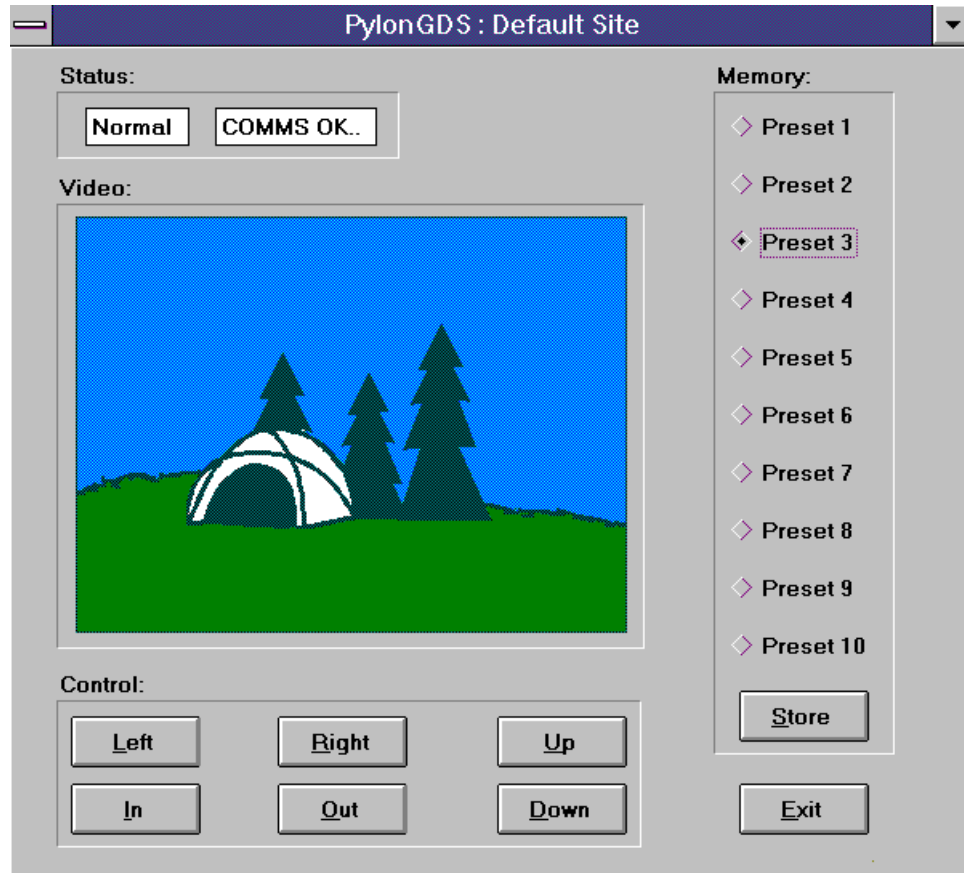


## PylonGDS-CAM : Remote Camera Control Software Systems



The Pylon GDS system is a general purpose, graphic display system for operator inter-action and control of intelligent plant equipment. The CAMera variant has been configured for use with video cameras and equipment, to fully automate the remote control of camera transmit sites from a central location.

### Features:

- Industry standard IBM PC compatible
- Multi platform Windows GUI
- User configurable
- Full on-line diagnostics
- Complete manual and automatic control
- Comprehensive context sensitive on-line help
- Continuous alarm supervision

### Description:

The Pylon software is connected to the camera site via standard PC serial communication channels, which operate high speed streaming protocols to ensure the fast secure execution of commands in the outstation.

Complete control of both pedestal and camera systems is provided through manual control buttons and a full set of automatic control facilities which include:-

- Goto preset targets
- Azimuth control
- Tilt control
- Zoom control
- Store/recall from a memory of 10 presets

Note: Product revisions may vary from the details given here

### For Further Information:

Web: [www.customelectronic.demon.co.uk](http://www.customelectronic.demon.co.uk)

Tel:+44 (0) 1767 313167

Fax:+44 (0) 1767 313167

## PylonGDS-CAM : Remote Camera Control Software Systems

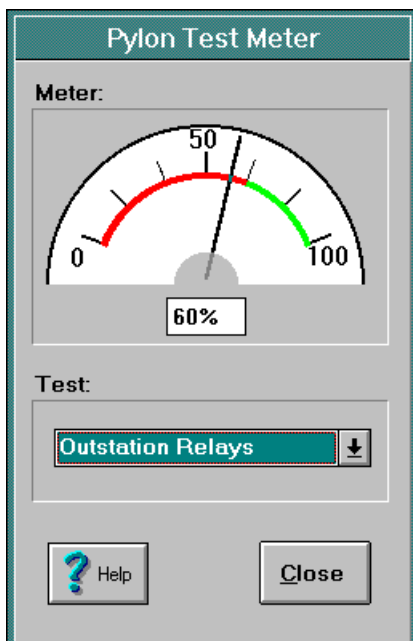
The package is available with a companion PC card which makes the camera video available 'in picture' on the computers touchscreen monitor enabling 'head up' display and control at a single point and saving the need for a further monitor.

Continuous alarm monitoring is made available both on camera site summary alarms and also on communication failures with the remote sites.

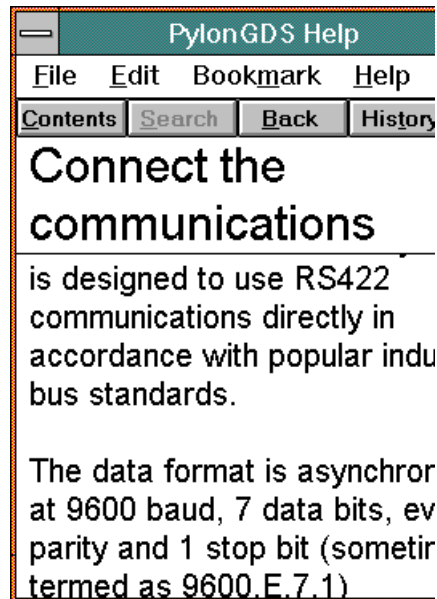
Context sensitive on-line help is available throughout the operators use of the package, which includes full documentation on how to use the package and control all aspects of its operation. A demo install facility and guided tour are available for evaluation purposes.

All aspects of the Pylon GDS configuration are available on-line and all communication parameters, site contents and databases are fully selectable and editable through this on-line configuration system.

Complete diagnostics of the Pylon GDS software and its communications with the remote sites are easily available through the use of the Pylon Test Meter, which provides on-line testing of all elements of the communication system, including the intervening modems and also provides facilities to exercise the relay and control functions in the distant outstation.



**PylonGDS Test Meter Diagnostics**



### Context Sensitive Help

Ordering Information	
PylonGDS-SNG Video Card	Part No: 8470 Part No: 8740-1

Note: Product revisions may vary from the details given here

### **For Further Information:**

Web: [www.customelectronic.demon.co.uk](http://www.customelectronic.demon.co.uk)

Tel:+44 (0) 1767 313167

Fax:+44 (0) 1767 313167