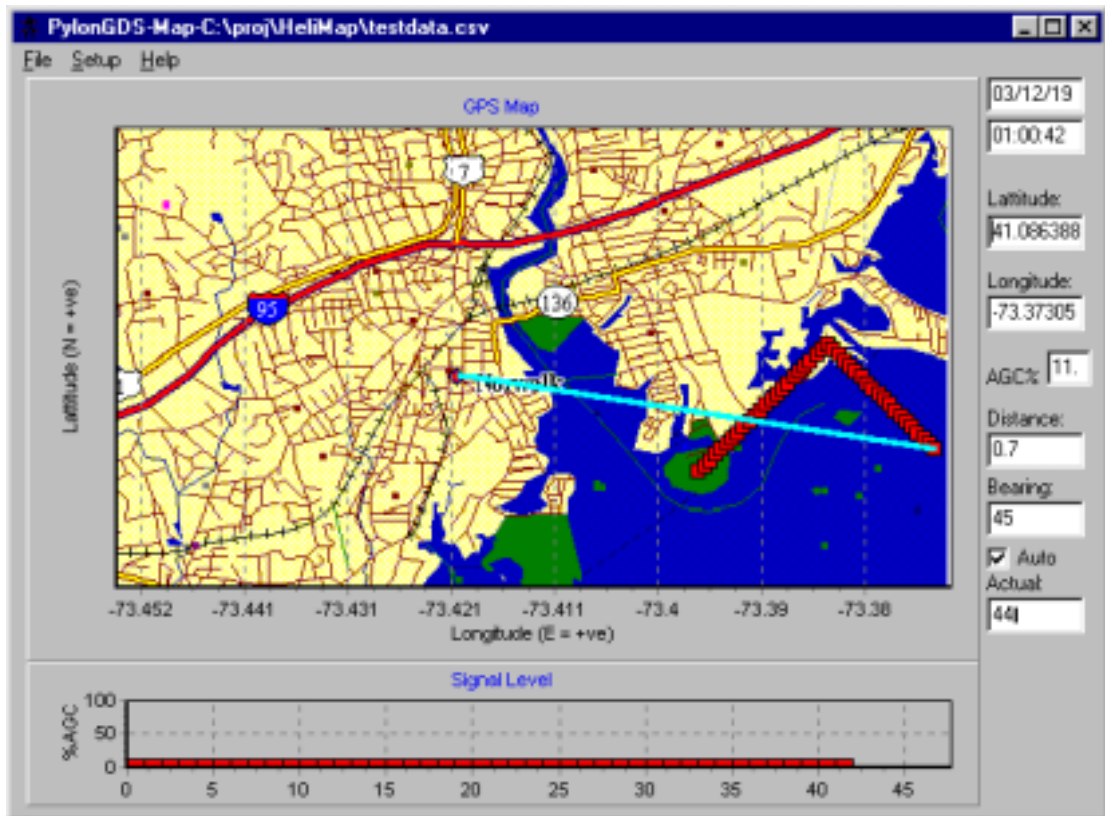


## PylonGDS-MAP : Mobile GPS Broadcast Logging Software System



The PylonGDS system is a general purpose, graphic display system for operator interaction and control of intelligent plant equipment. The 8840 PylonMAP variant has been configured specifically to handle data recording and replay of GPS broadcast data from both fixed and mobile central receive sites.

Facilities are provided for the data logging and recording of position and performance, including a real-time moving map display together with the saving and historic replay of the information collected.

### Features:

- Industry standard IBM PC compatible
- Multi platform Windows GUI
- User configurable
- Engineering Units Translation
- Simple Upload, Store, Edit and Download Facilities
- Storage of Multiple Codec Configurations
- Comprehensive context sensitive on-line help

### Description:

The Pylon-GDS-MAP system is a PC software application designed for the recording and replay of positional and signal data obtained from mobile transmission sources. Typically this will be used by either a fixed or mobile central receive system employing Pylon outstations and master station software with transmissions coming from a mobile transmit location such as a helipod controller with autotracking capabilities.

The system allows for the data logging and recording of position and performance, including a real-time moving map display together with the saving and historic replay of the information collection.

The map displays may be user generated by exporting from proprietary mapping packages or, alternatively, scanning from other sources for countries in which popular CD mapping applications are not yet available.

Note: Product revisions may vary from the details given here

### For Further Information:

Web: [www.customelectronic.demon.co.uk](http://www.customelectronic.demon.co.uk)  
Tel:+44 (0) 1767 313167  
Fax:+44 (0) 1767 313167

## PylonGDS-MAP : Mobile GPS Broadcast Logging Software System

The PylonGDS system requires a 486 or higher PC, Windows NT4 or Windows 95, 15mBytes of disk space is required together with a free communications port with which to connect the receive outstation.

The PylonGDS-MAP system presents a main program screen which has an operator menu structure to access 'File', 'Setup' and 'Help' functions below which is a tool-bar to allow short cuts to the most common functions. Hints are displayed when the mouse cursor is held inactive over particular controls and using the menu and tool-bar controls, the user can navigate through the system.

A key feature of the package is the ability to quickly and easily see the current and historic locations of the transmission on a real-time GPS map, together with a trend of the receive site signal level.

All aspects of the Pylon GDS configuration are available on-line and all communication parameters, site contents and databases are fully selectable and editable through this on-line configuration system.

Context sensitive on-line help is available throughout the operators use of the package, which includes full documentation on how to use the package and control all aspects of its operation. A demo install facility and guided tour are available for evaluation purposes.



Ordering Information	
PylonGDS-MAO	Part No: 8840

Note: Product revisions may vary from the details given here

**For Further Information:**  
 Web: [www.customelectronic.demon.co.uk](http://www.customelectronic.demon.co.uk)  
 Tel:+44 (0) 1767 313167  
 Fax:+44 (0) 1767 313167