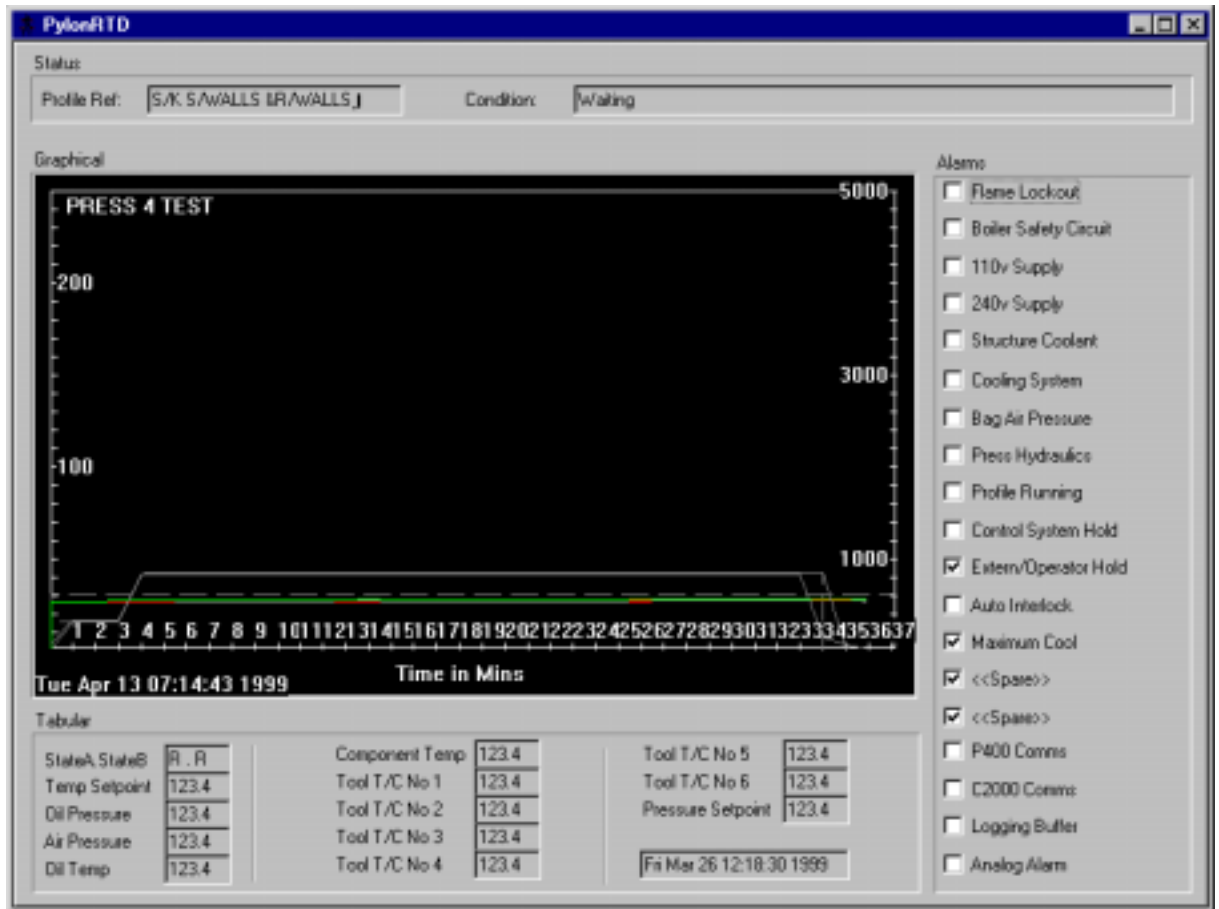


PylonGDS-8451 : Composite Press Control Software System



The Pylon GDS system is a general purpose, graphic display system for operator inter-action and control of intelligent plant equipment. The 8451 variant has been configured for use with composite material press and autoclave installations, to fully automate the cure control of composite components from a central location.

Description:

The Pylon software is connected to the control systems via standard PC serial communication channels, which operate high speed streaming protocols to ensure the fast secure execution of commands and acquisition of data.

Complete control temperature profiling, controllers and sequencing is provided through the use of a three-tier system which includes: -

- System supervisory workstation for job control and data inspection.
- Real-time operator display stations.
- Secure control level.

Features: -

- Industry standard IBM PC compatible
- Multi platform Windows GUI
- Complete manual and automatic profile generation
- Quality control of released profiles
- Automatic error-free profile data transfer for control
- Automatic data collection and recording
- Historic data review for quality records
- Data archiving and exporting.



For Further Information:

Web: www.customelectronic.demon.co.uk
Tel:+44 (0) 1767 313167
Fax:+44 (0) 1767 313167