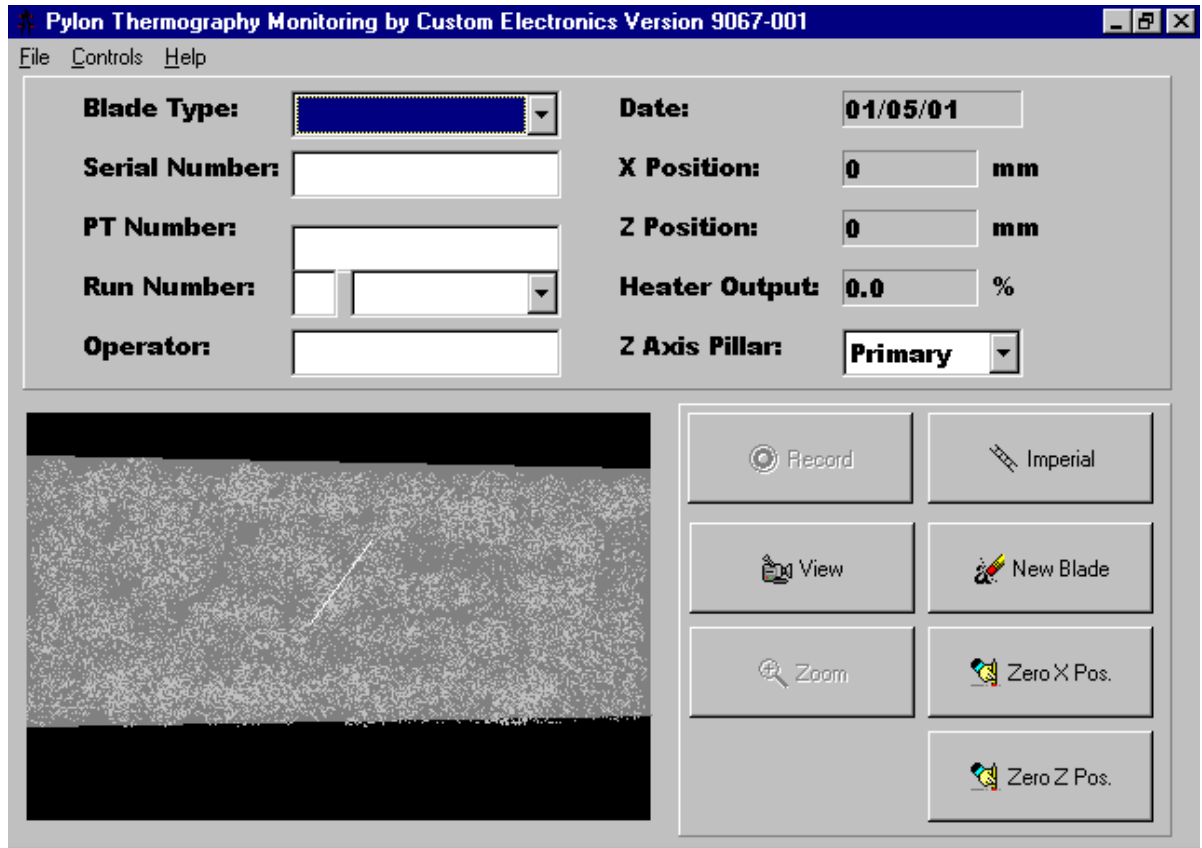


PylonGDS-9067 : Composite Thermography Control Software



The Pylon GDS system is a general purpose, graphic display system for operator inter-action and control of intelligent plant equipment. The 9067 variant has been configured for use with composite material thermography installations, to fully automate the thermal inspection sequence of composite components from a central location.

Description:

The Pylon software is connected to a colour thermal camera and a PLC control system via standard PC serial communication channels.

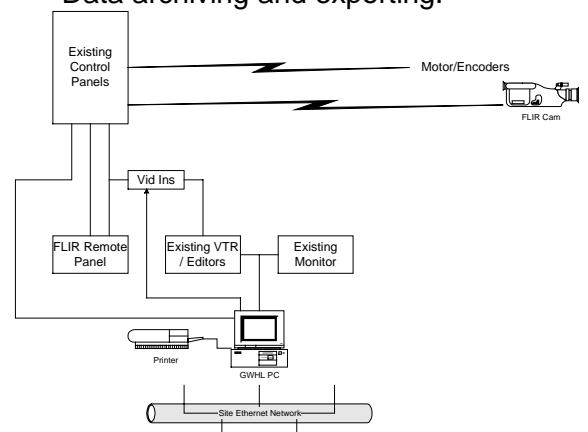
The software handles video pipelining and insertion of test data into the analogue camera output before recording for quality records.

Complete control of the test sequence is provided through the use of an operator interface which includes: -

- Test data generation.
- Real-time operator display.
- Integration with machine controls.

Features: -

- Industry standard IBM PC compatible
- Multi platform Windows GUI
- Complete manual and automatic sequence generation
- Quality control of released profiles
- Automatic error-free sequence data transfer for control
- Automatic data collection and recording
- Historic data review for quality records
- Data archiving and exporting.



Note: Product revisions may vary from the details given here

For Further Information:

Web: www.customelectronic.demon.co.uk

Tel:+44 (0) 1767 313167

Fax:+44 (0) 1767 313167