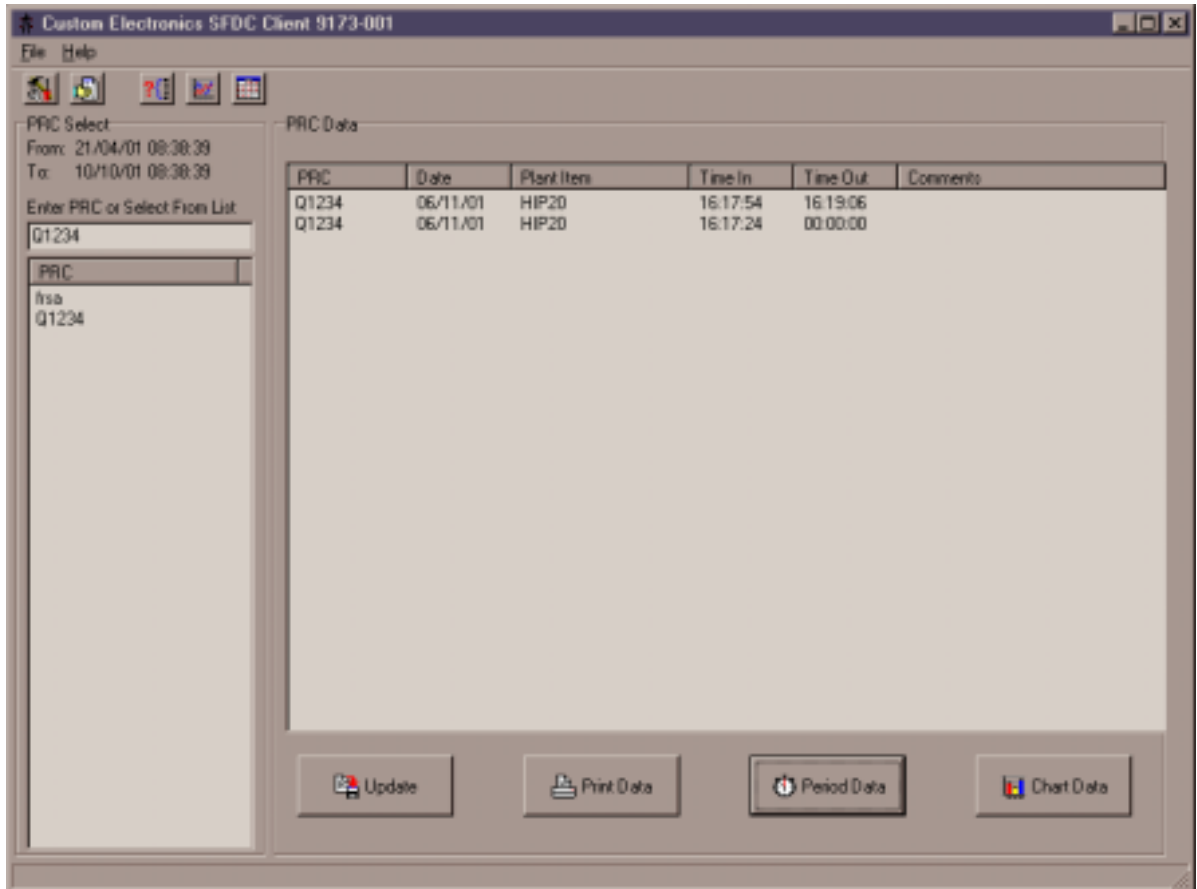


## PylonGDS-9168 : Shop-Floor Reporting Software System



The Pylon GDS system is a general purpose, graphic display system for operator inter-action and control of intelligent plant equipment. The 9168 variant has been configured for use Pylon Control Systems, to fully automate the tasks of shop-floor data collection (SFDC) and reporting from central locations.

### Description:

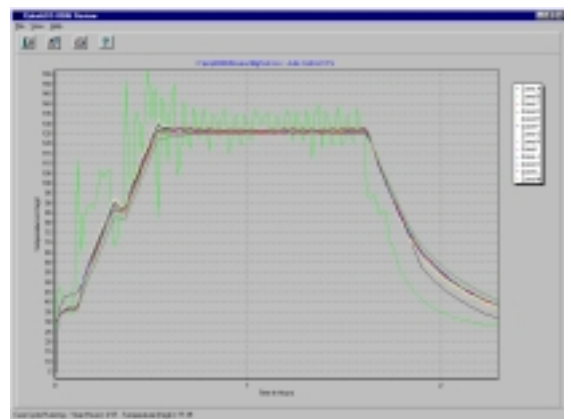
The Pylon software is connected to the various plant controls using data networking and SFDC information servers. This allows either central or distributed computing to be adopted.

The software handles provides:

- Bar-code generation for works orders.
- Batch data entry at the control interface
- Automatic correlation of process and tracking data
- Real-time operator display.
- Graphical and tabular reporting and analysis tools
- Order tracking
- Plant though-put reporting

### Features: -

- Industry standard IBM PC compatible
- Multi platform Windows GUI
- Complete automatic sequence.
- Quality control of released data
- Automatic error-free data transfer
- Automatic data collection and recording
- Historic data review for quality records
- Data archiving and exporting.



Note: Product revisions may vary from the details given here

### For Further Information:

Web: [www.customelectronic.demon.co.uk](http://www.customelectronic.demon.co.uk)

Tel:+44 (0) 1767 313167

Fax:+44 (0) 1767 313167