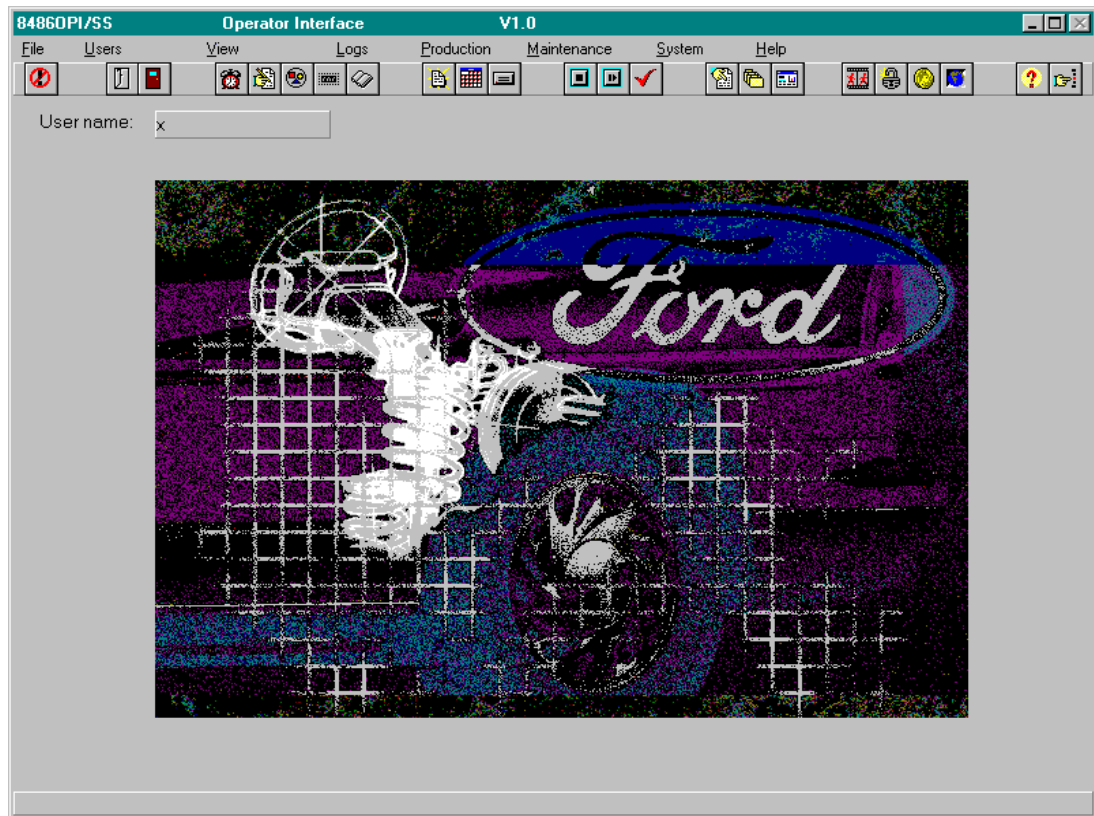


8486 - PylonRTScheduler : Real Time Optimising Scheduler System



The Pylon GDS system is a general purpose, graphic display system for operator inter-action and control of intelligent plant equipment. The 8486 variant has been configured for use with soft PLC systems, to fully automate the real-time scheduling of manufacturing plant.

Description:

The Pylon software is connected to the plant via a soft PLC system and reads the production attributes of orders being manufactured. In real-time the software then applies a set of prioritised scheduling rules to the production orders available and selects the optimum unit to manufacture next in order to achieve a balanced production mix.

The user has complete control of the process, being allowed to enable/disable rules on the fly and also to 'hold' or 'call-out' particular production orders.

The system is data-driven allowing most aspects to be user configurable. A comprehensive activity log is recorded during operation for performance monitoring.

Features: -

- Industry standard IBM PC compatible
- Multi platform Windows GUI
- User configurable
- Multi-format User Interface
- Continuous alarm supervision
- Real-time scheduling
- Production attributes
- Production groups
- Production types
- Multiple rule structures
- Rule prioritisation
- Data and event recording
- Integrated with clients order data
- Softlogix compatible

Note: Product revisions may vary from the details given here

For Further Information:

Web: www.customelectronic.demon.co.uk

Tel:+44 (0) 1767 313167

Fax:+44 (0) 1767 313167